

FLIGHT OPERATIONS SOLUTIONS

# Flight Management Data Services



Data for operational  
productivity and flight plan  
accuracy

# Flight Management Data Services

Flight Data Services provides best-in-class aeronautical data to help airlines increase their productivity and flight plan accuracy by enabling machine data-driven decisions and automation. Extensive high-quality worldwide aeronautical data from national Aeronautical Information Publication (AIPs) including Airport and Airspace restrictions as well as National Route Systems or flight plan planning addresses. Data is gathered from CAE's Flight Planning system as well as from other vendors.

## Airport Data

Airspace users seeking to invest in automation require this data. It is used to ensure flight plan accuracy and augment safety. This data has various practical applications beyond flight planning that can enhance the safety and efficiency of your operations.

Aerodrome AIP data:

- Opening times
- Rescue and Fire Fighting (RFF) category
- Customs times
- Fuel type
- Runway Pavement Classification Number (PCN)

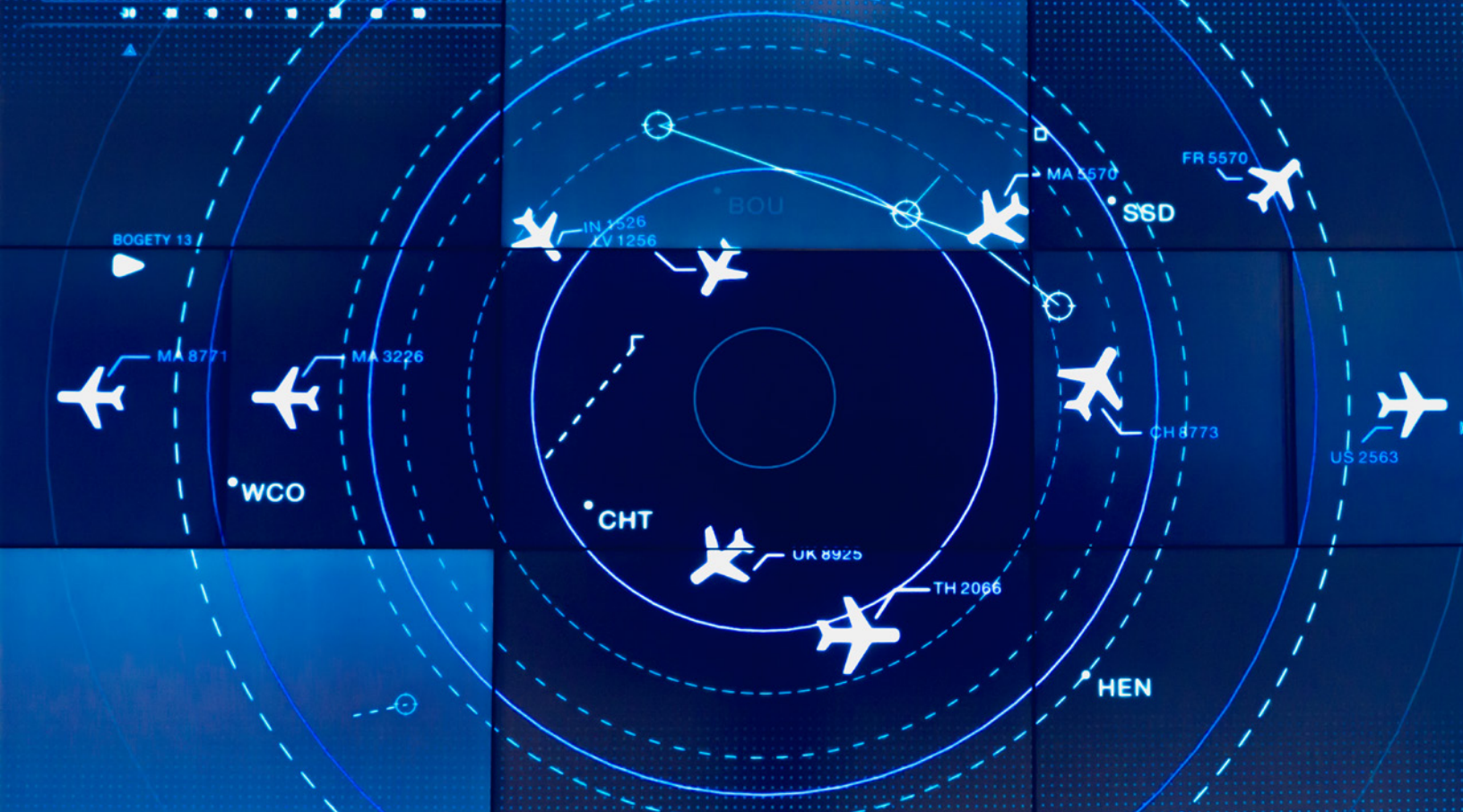
## Aeronautical Information Publication (AIP) Supplement Handling

AIP supplements contain critical information that affects the planning phase of a flight. Having this data increases the flight plan accuracy and overall flight safety.

CAE provides global\* AIP supplement handling consisting of:

- Airport/Runway closures
- Area restrictions
- Mandatory routes





## Flight Plan Filing Addresses

Airspace users must send their flight plans to specific stations (Air Traffic Services) before departure. These addresses are not easy to obtain. Having the correct address will avoid last minute issues including flight delays.

CAE provides worldwide AFTN\* (Aeronautical Fixed Telecommunications Network) filing addresses for:

- Airports
- FIRs (Flight Information Regions)
- Oceanic Airspace

## National Flight Route Schemas

This data is essential to produce a valid, safe and regulatory compliant flight plan. Airlines seeking to invest in automation require this data. These routes are critical in certain regions and airlines must adhere to them. CAE currently provides the majority of National Flight Route Schemas that are published.

## Standard Instrument Departure, Standard Arrival (SID/STAR) Constrains

Airspace users need their plan to be as accurate as possible. Knowing what departure or arrival will be used can help airspace users reduce operational costs (fuel) and increase the safety of flights.

CAE provides the following data for selected airports:

- By Air Traffic Controller flag (ATC)
- Time constraints
- Fleet type constraints
- Aircraft category constraints

## Worldwide Restrictions

Airspace restrictions are essential for the accuracy and the safety of the flight plan.

CAE provides the following data for select regions:

- Restrictions data for accurate flight planning
- Aeronautical Information Publication (AIP) enroute restrictions
- NOTAMs restrictions (Airport, Runway, Enroute)

\* Limited available data for certain AIPs

## As an Aviation Professional, ask yourself:

- What data do you need?
- Do you lack data to automate business processes?
- Do you have limited automation or system assistance?
- Do you have constant tight delivery timelines?
- Do you lack access to official data sources?
- Do you lack resources?

## How Can Data Help?



Data can help automate flight planning processes in Flight Plan Manager\*



Data can be consumed by other non-CAE products, improving their throughput and productivity (i.e.: Air Traffic Services)



Data can help Navigation Officers reduce back-office workload



Data can help your operations switch to a manage-by-exception model.



### For more information

Contact your Account Manager

or email us at [CivilFlightServicesSalesOps@cae.com](mailto:CivilFlightServicesSalesOps@cae.com)