

Crew Management



A complete end-to-end ecosystem, proven to reduce costs with intelligent optimization and bring efficiency to your operations.

A complete crew management ecosystem that helps airlines control costs, maintain safety standards, and increase crew member satisfaction to drive passenger experience: Crew Planner, Crew Manager, Disruption Manager, Crew Access.

Key benefits

- Artificial Intelligence and machine learning powered resource planning tool to accurately forecast crew resource and plan crew career progression
- Advanced training management solution to optimize, schedule and track crew trainings and qualifications
- Re-engineered optimizers with independent rules engines to reduce costs with more efficient pairings and schedules
- A unified, powerful workspace to efficiently manage the crew operation and minimize delays with an open-source reporting engine
- Intelligent recovery optimization to get crew back on plan faster after large-scale disruption
- Agile self-service tools to provide crew members with real-time cloud-enabled information anytime, anywhere with a native mobile app on both Android and iOS
- A robust Web/microservices integration powering the platform technology

Crew Management

Crew Planner

Intelligent pairing and roster optimization to reduce costs while improving quality of life

- Decrease manual processes for scheduling staff with optimization for pairing and roster creation
- Increase crew member productivity by up to 15%
- Reduce operating costs and eliminate unnecessary assignments
- Evaluate scenarios to predict future resource

Crew Manager

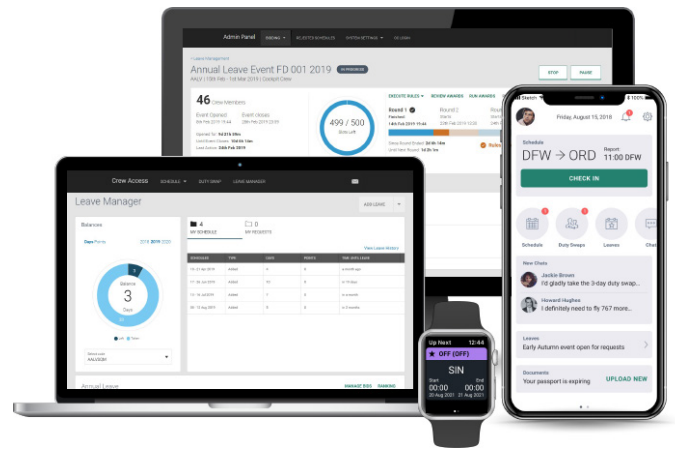
Unified, powerful workspace to efficiently manage the crew operation and minimize delays. Intelligent disruption management to get crew back on plan faster

- User-centric, configurable design
- Dynamic rules management using natural-language rules-engine
- Configurable rules for faster change management
- Web services-based architecture
- Customizable and personalized reports to support unique business demands
- Simultaneous pairing and roster generation for disruption scenarios
- Simulation to generate plan based on forecasted disruption or cancellation package
- Reduce deadheading dependency by automatically evaluating augmentation needs as part of disruption optimization

Crew Access

Agile self-service tools to provide crew members with real-time information anytime, anywhere

- Mobile self-service to increase crew member satisfaction
- Real-time ecosystem integration
- Native mobile app to provide crew with contextual information
- Admin panel for agile management
- Crew chat feature to reduce sharing of personal data



For more information, please visit

cae.com/flight-operations-solutions