

Training Management

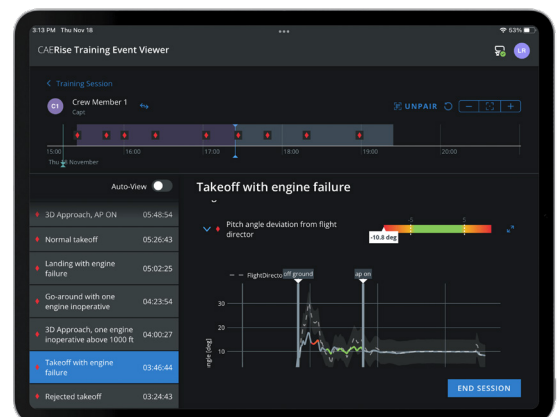
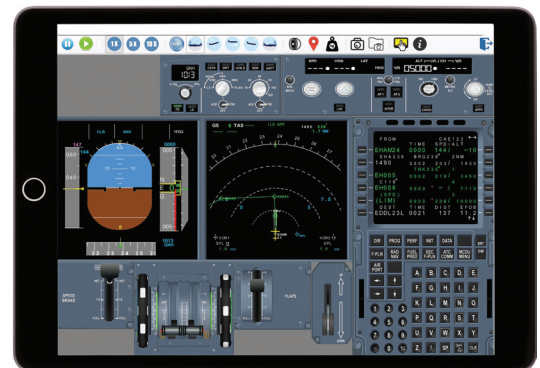


Elevated Safety and Training with CAE Rise™ and Training Management and Deployment Systems (TMDS)

Training Management harnesses the power of data to elevate safety, readiness and efficiency. Customers benefit from added training intelligence to elevate training standards and mitigate training deficiencies. Operators also gain access to course development teams, a complete training management system, an extensive courseware library and unparalleled service.

Key Benefits

- **Safer Pilots**
 - Catches errors instructor may not detect
 - Uses objective data to measure pilot performance
 - Manages and tracks the entire learning experience
- **Better Instruction**
 - Calibrates/standardizes instructor training across training centers
 - Focuses training on operator SOPs
 - Manages qualifications to ensure all regulations are met
- **More Effective Training**
 - Streamlines collection of training data
 - Uses data analytics to support evolution of training programs
 - Leverages electronic grading and training scheduling
 - Offers a mobile option for convenience



Training Management

CAE Training Management and Deployment System (TMDS)

CAE TMDS is a web-based solution providing training deployment and compliance management solutions.

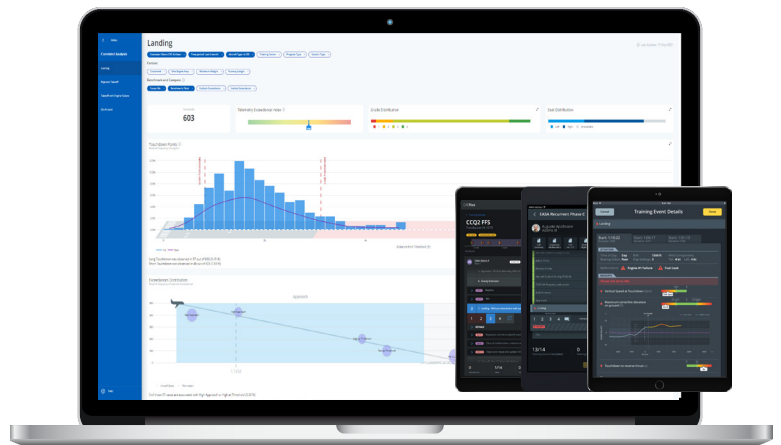
- Learning Management
- Exam Generation
- CrewPad Mobile App
- Qualifications Management
- Electronic Grading
- Training Scheduling



CAE Rise™

CAE Rise™ is a next-generation app that leverages data analytics to increase pilot training effectiveness.

- **eGrading app** to deliver training and capture assessment data in a standardized manner and generate training records.
- **Metrics-based insights** automatically detect and assess predefined training events during simulator sessions.
- **Analytics** provide training intelligence that enables effective data-driven decision-making to elevate training standards.



For more information

cae.com/flight-operations-solutions

All rights reserved © CAE Inc. - 2023

The CAE logo, consisting of the letters 'CAE' in a bold, blue, sans-serif font.