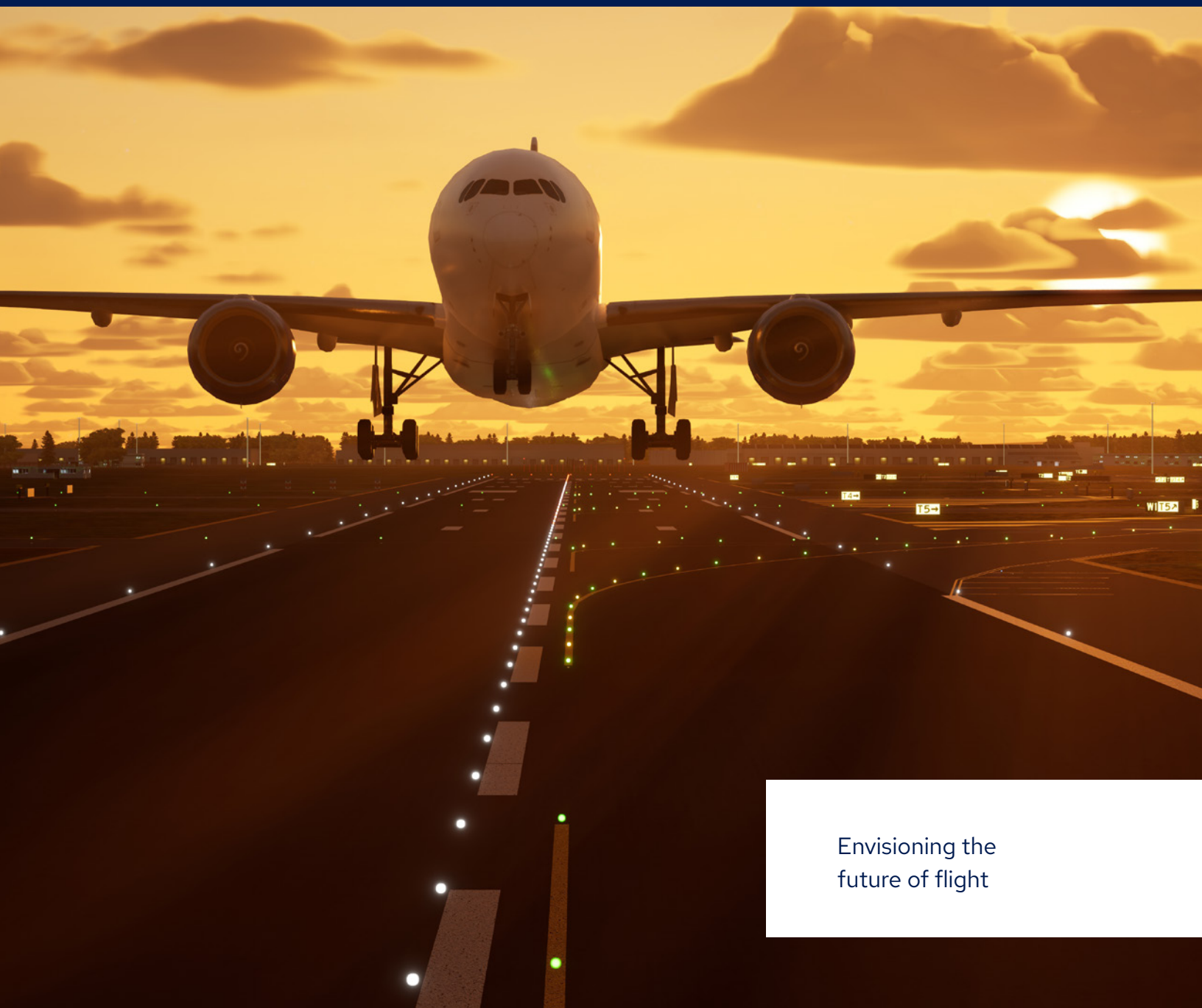


CAE

CIVIL AVIATION

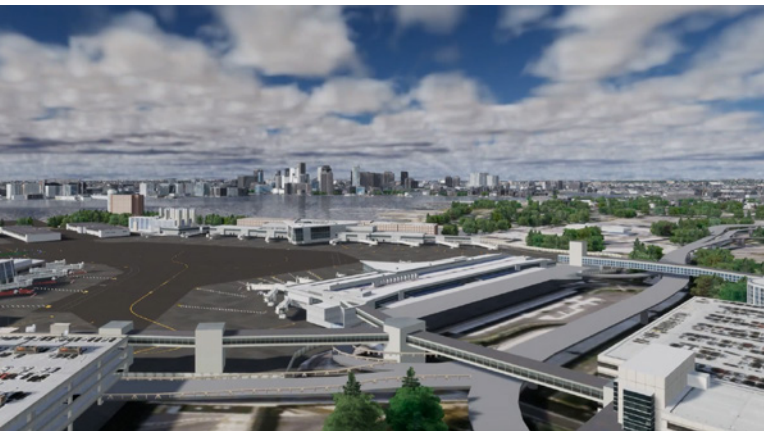
# CAE Prodigy Image generator



Envisioning the  
future of flight

# Introducing the latest gaming-based technology visuals to CAE simulators

The CAE Prodigy image generator integrates CAE's latest gaming-engine-based technology combined with synthetic environment solutions to deliver stunningly realistic graphics via extraordinarily true-to-life visual images. Using Commercial-Off-The-Shelf (COTS) projection technology, CAE continues to lead the way in immersive training for civil applications. Designed to be flexible and scalable, this solution is compatible with directed projection, head-mounted display and collimated display.



## CAE leads the industry in the adoption of new technologies for digital immersion

- First major simulator provider to embrace gaming technology
- CAE's simulation and training experience is key in customizing and integrating Game engines into professional simulators
- CAE Prodigy enables reuse of already developed content and scenarios while unlocking the potential for significant improvements



### Powered by gaming engine technologies

- Based on the world's most advanced real-time 3D creation tool.
- High-fidelity gaming-engine generated graphics provide an extremely realistic environment.



### True-to life visual images

- Enhanced lighting with shadows, reflections and specular effects.
- Ability to support increased scene density covering larger areas in cities and airport zones.



### COTS-based construction

- Flexible and adaptable due to COTS-based construction.
- Provides an upgrade path for any currently fielded FFSS.



Leading the way in immersive training, delivering stunningly realistic graphics via extraordinarily true-to-life visual images for the ultimate interactive training



### Advanced Air Mobility

CAE Prodigy will also be available on the CAE 700MXR Flight Simulator and will be enhanced in urban areas with higher imagery resolution and AI-generated geo-typical 3D content. Additionally, smaller geo-specific regions within the larger urban geo-typical areas will be seamlessly integrated to provide exact world replicas during critical phases of flight.



**CAE is a high technology company,  
at the leading edge of digital  
immersion, providing solutions to  
make the world a safer place.**

Backed by a record of 75 years of industry firsts, we continue to reimagine the customer experience and revolutionize training and operational support solutions in civil aviation, defence and security, and healthcare.

We are the partner of choice to customers worldwide who operate in complex, high-stakes and largely regulated environments, where successful outcomes are critical. As testament to our customers' ongoing needs for our solutions, over 60 percent of CAE's revenue is recurring in nature.

We have the broadest global presence in our industry, with more than 13,000 employees, 200 sites, and training locations in over 35 countries.

[www.cae.com](http://www.cae.com)